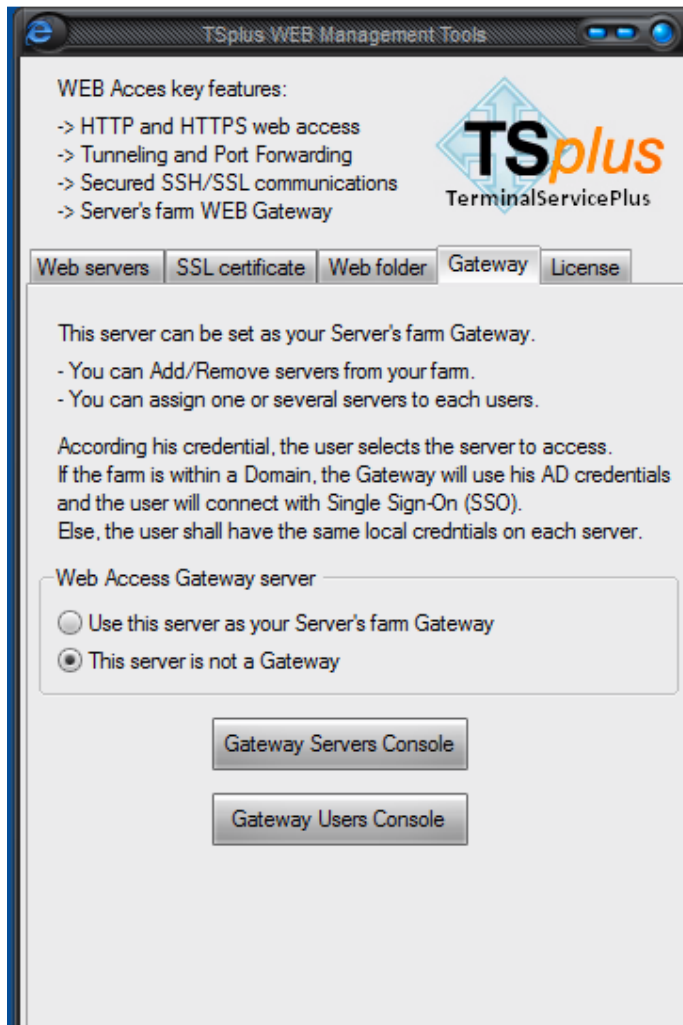


Gateway Feature

Web Server Management Console - Gateway Tab

A Management Console is available in the Administrator Tool.

This Management Console enables you to configure Terminal Service Plus built-in Web Server, including the Gateway in its own tab:



Overview

A server can be set as the Gateway of your farm of servers.

- You can Add/Remove servers from your farm.
- You can assign one or several servers to each users.

According his credential, the user selects the server to access.

If the farm is within a Domain, the Gateway will use his AD credentials and the user will connect with Single Sign-On (SSO). Otherwise, the user shall have the same local credentials on each server.

Choosing the role of the current server

- if you click on the "Use this server as your Server's farm Gateway" radio button the utility will be enabled.
- if you click in the "This server is not a Gateway" radio button the utility will be disabled.

Managing the Servers of the Gateway

To manage the servers please click on the "Gateway Servers Console" button. The "TS Web Gateway Server List Management" GUI will open:



When you click on the "Add" button you can then add a TSPlus Server by Display name

Display name:	<input type="text" value="Add"/>
IP address:	<input type="text" value="192.168.1.1"/>

and IP address:

When complete please click the "Update" button to add the server to the "Servers List".

To remove a server from the "Server List", click on the server to be removed and then click the "Remove" button. The server will then be removed from the list.

The "Assign Users" button is explained in [Managing Gateway Users](#).

When you are completed and ready to exit the "TSPlus Web Management" utility, please click on the "Save" button.

