



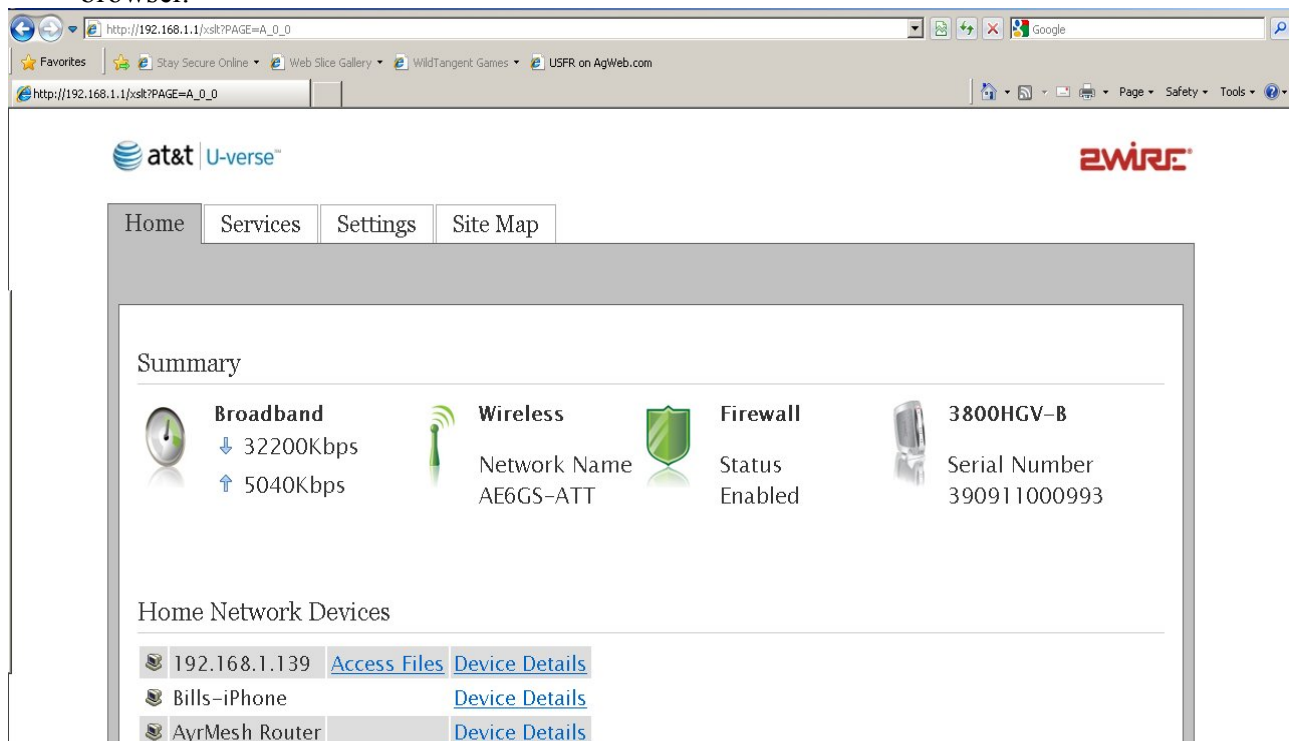
## Putting your AyrMesh Router into the DMZ of the 2Wire Gateway.

The 2Wire Gateway Device (mostly associated with the AT&T U-Verse service) is flexible and capable “3-way” device, which provides phone service, Cable TV, and Internet service through its built-in router.

To use the AyrMesh Router, it must be directly connected to the Internet, so the AyrMesh Router must be in the “DMZ” of the 2Wire Router.

This is very easy to do by following these simple steps.

- 1.) Log in to your 2Wire Gateway using a browser on a computer attached to the 2Wire gateway. Just type the IP address of the 2Wire Gateway (typically 192.168.1.254) into the URL bar of the browser.



- 2.) On the front page, you can see the AyrMesh Router. Click on the *Device Details* link on the right.

Home Services Settings Site Map

System Info Broadband LAN Firewall Logs Diagnostics

[Status](#) Wireless Wired Interfaces DHCP IP Address Allocation Statistics

Device Details

<b>Name</b>	AyrMesh Router
Connection Type	Ethernet
IP Address	192.168.1.126
IP Address Allocation	DHCP
IP Address Type	Private (NAT)
Hardware Address	00:15:6d:9d:11:2e
Status	On

3.) Click on the link at the top that says *IP Address Allocation*, then scroll down until you find the AyrMesh Router

Device: iPhone

Current Address	192.168.1.112
Device Status	Not Connected
Firewall	Enabled ▾
Address Assignment	Private from pool:192.168.1.0 ▾
WAN IP Mapping	Router WAN IP address (default) ▾

Device: AyrMesh Router

Current Address	192.168.1.126
Device Status	Connected DHCP
Firewall	Enabled ▾
Address Assignment	Private from pool:192.168.1.0 ▾
WAN IP Mapping	Router WAN IP address (default) ▾

4.) In the box for the AyrMesh Router, change the Firewall setting to **Disabled**, and the Address Assignment to **Public (Select WAN IP Mapping)**. Then click *Save*.

Home Services Settings Site Map

Login

Password:

[I forgot the password](#)

- 5.) The Gateway may ask for your password at this point, as shown. Type it in and click *Submit*. The Gateway will “think” for a moment and let you know that the configuration has been changed.

Home Services Settings Site Map

System Info Broadband LAN Firewall Logs Diagnostics

Status Wireless Wired Interfaces DHCP [IP Address Allocation](#) Statistics

**Configuration Successful**

Public-Private NAT Mappings and Device IP Allocation

This section allows you to configure the system to allocate specific IP addresses to devices that are running in DHCP mode, and map devices to particular static or public IP addresses, also known as NAT mappings.

- 6.) The AyrMesh Router is now connected directly to the Internet. Configure the AyrMesh Router for a DHCP connection.

NOTE: on some 2Wire devices, it seems to take an hour or more for this to take effect. You may even need to reboot the 2Wire Gateway.